



Guaranty Trust Bank plc
RC 152321

Be a voice for children
& adults living with
Autism

7th
ANNUAL
AUTISM
programme

Theme:

Childhood to Adulthood:
Communication & Social
Development

Date:

13th - 22nd July, 2017



The Orange Ribbon Initiative

#BeAVoice
www.gtbank.com/autism





Guaranty Trust Bank

GUARANTY TRUST BANK AND CORPORATE SOCIAL RESPONSIBILITY

At Guaranty Trust Bank plc, Corporate Social Responsibility (CSR) is a key component of our business strategy. We are driven by the developmental challenges of our host communities and believe that giving back to the host communities is a requirement for the overall development of the country and our business. We ensure that our CSR projects are targeted towards the needs of the society and are sustainable.

We passionately believe that Social responsibility embodies our ardent commitment and social pact with all our stakeholders. Our CSR programs are also strategically diversified through involvements of customers, shareholders and staff.

In order to ensure optimum impact and sustainability, our CSR strategy focuses on four major pillars, namely; Community Development, Education, Environment and Arts; as we believe they are essential building blocks for the development of communities and prerequisites for economic growth.



CSR

is how we colour lives around us

Support for Health | Support for Arts | Support for Education | Support for Sports
Street Directional Signage Initiative | Support for Children with Special Needs

www.gtbank.com



+234 700 GTCONNECT or +234 700 482666328.
+234 1 448 0000, +234 80 3900 3900, +234 80 2900 2900

Connect with us



Table of Contents

CEO's Welcome	4
The Orange Ribbon Initiative	5
The 2017 Autism Programme	7
Presentations	10
One-on-one Consultation	12
Facilitators' Profiles	13
Certification Course 2017/18	21
Testimonial	23
GTBank's Profile	24
Our Partners	25
Autism Directory Nigeria	27



CEO's Welcome

Segun Agbaje

I am pleased to welcome you to the 7th edition of our Annual Autism Conference themed "Childhood to Adulthood: Communication and Social Development".

In the past six years, we have made tremendous achievements in amplifying the national awareness on Autism Spectrum Disorders (ASD) and increasing the expert assistance available to people living with Autism. More than 10,000 people have participated in our Annual Autism Conferences since its inception, we have offered free consultation services to over 3000 children and, leveraging our brand and the mass media, we have engaged the general public in a sustained campaign to tackle the stigma facing people living with autism.

Yet, there's still a lot to be done. Autism, as a lifelong condition with several layers of challenges, demands a concerted effort to support children and adults living with autism, their families, caregivers and the experts who are working day and night on innovative solutions for people with developmental disabilities and special needs.

Acceptance remains the key that bridges the divide. Unlike most disabilities that are defined in terms of what is missing, autism is not a disability. It is as much about what is abundant as what is missing; an over-expression of the very traits that make our species unique. Our job then, is to do all we can to make life more pleasant and more meaningful for every child and adult living with autism. If they can't learn the way we teach, we teach the way they learn. I personally agree with the popular quote that people living with autism are the ultimate square pegs, and the problem with pounding a square peg into a round hole, is not that the hammering is hard work, but that you are destroying the peg.

When we realise that nobody chooses autism, if anything, it chooses you; perhaps, we will learn to accept those living with it and see them as we see ourselves. The truth is, there is no known cause neither is there any known medical cure.



I want to specially thank all our partners for their support and for staying with us all through the years. My special appreciation goes to the parents, who nurture these children and work tirelessly and endlessly to provide the support system they require in living meaningful lives. I would also like to thank everyone gathered here today; representatives of Governments, parents, caregivers and members of the general public concerned about Autism. Let us be more determined and resolute, to be a voice for people who don't have a voice.

To our children, autism is only a part of who you are, it is not everything you are. You are so much more than a diagnosis, you are special and uniquely different.

Thank you.



The Orange Ribbon Initiative

At Guaranty Trust Bank, we are in a unique position to help our customers thrive and spur the growth that fuels their progress. We not only want to understand the challenges people face, we want to make a meaningful difference in helping solve them. Our corporate social responsibility initiatives have the same objective; to use the skills, resources and expertise of the organisation to support the economic growth and progress of our communities.



Our foot prints in Corporate Social Responsibility projects are guided strategically by our decision to operate on the four major pillars of Education, Community Development, Arts and the Environment, which we believe are essential building blocks for the development of communities and prerequisites for economic growth.

This commitment to a well-defined CSR strategy, illustrates our social pact with all our stakeholders and can be seen in the way we run our organisation, the inclusive and supportive workplace we create for our employees, the responsible products and services we offer our customers and clients, and the impact we make around the world in helping local economies thrive.

For Guaranty Trust Bank plc., every day presents the opportunity to make history. We work in partnership with Non-Governmental and Charity Organizations that share our vision and values, to create societal awareness and acceptance of developmental disabilities and stimulate community investment activities in child healthcare.

Child development that occurs from birth to adulthood has not always been a focus throughout much of human history. Children have been viewed simply as small versions of adults and little attention was paid to the many advances in cognitive abilities, language usage, and physical growth that occur during childhood and adolescence and then on to adulthood. This is the motivation for the Guaranty Trust Bank Orange Ribbon Initiative which commenced in 2009.

The Orange Ribbon Initiative supports children, especially those with developmental disabilities and special needs. We through this initiative dedicate our resources to tackling the developmental, social and psychological challenges faced by children with Autism Spectrum Disorder (ASD) and have worked passionately for the past 8 years to pro-actively meet their needs in various areas.



The Orange Ribbon Initiative focuses on;

- Ensuring the society is aware of ASD
- Educating parents, caregivers, educationists and health workers about the requirements, care and management of ASD
- Advocating for the establishment of comprehensive and inclusive schools for children living with Autism as well as integrated centres for adults
- Sponsoring and supporting legislation that protect the rights of people living with ASD
- Supporting research about Autism
- Providing free consultation services for assessment and follow-up programs to support children and adults living with ASD.

The journey in supporting people living with Autism is life-long and we constantly work with the parents and care givers alike.

Together with people of similar interests in the care and management of Autism, we come together meetings and trainings, which has now grown to become a conference over the years. This is aimed at improving awareness and management of ASD and has been well attended by parents, professionals and care-givers and viewed through several channels across the globe.



We also have structured methods of collaboration to increase the success of the Orange Ribbon Initiative. This partnership involves the coalition of the inherent resources of partners for the execution of the projects.

Our collaboration started with Patrick Speech and Languages Center, Ikeja, Lagos in 2009, ASD specialists from the Blazing Trails International Center Lewisville, Texas, USA in 2011 and



expanded to include the State and Federal Ministries that are responsible for children and parents; which include the Ministries of Education, Health and Women Affairs. The collaboration was strengthened with the College of Medicine, University of Lagos in 2013 and with the Neuropsychiatric Hospital, Aro, Abeokuta in 2016.

Over the years, we have addressed various topical areas of developmental issues such as Behaviour Modification, Education, Nutrition, Social Support, Assessment and Psychology. We have also provided free consultation / assessment services to parents who have children living with neurodevelopmental disabilities. Children were accessed by specialists in areas such as Speech Therapy, Audiology, Behaviour Therapy, Occupational Therapy, Psychiatry, clinical Psychology and General Medicine.





The 2017 Autism Programme

Theme - Childhood to Adulthood: Communication & Social development

There are fundamental life skills that all children need to acquire to successfully transition to adulthood, and this is even more critical for individuals with autism and other neurodevelopmental disabilities. This special group of skills include Executive Functioning skills, which are a set of mental skills that enable an individual the ability to “get things done.”

Executive Functioning skills are controlled by the frontal lobe of the brain and include mental functions such as time management, attention span, controlling inhibitions and cognitive memories, all of which figure prominently in helping individuals with autism achieve life-long development. Oftentimes, these skills are missing.

Over the years we have learnt that to have an adult with Autism live a full and functional life, particular attention needs to be paid to building these skills from childhood. Without the proper foundation, our adults with Autism grow up confused about how to make friends or unable to carry out other social functions that they deeply want to participate in. This often leads to anxiety and depression at an early age.

To ensure that our children with Autism can grow up to be functioning adults in various fields of life, we need to engage them with the precise solutions right from their childhood, especially in our part of the world where the level of awareness is still quite low. This means reviewing how we cater to the education of children with autism. There is an ongoing conversation on the importance of inclusion in schools which often sees children with low communication skills and other

social difficulties put through exactly the same education with their peers. While some elements of this can be helpful, it is often not productive, and indeed, harmful to the development of the child with autism.

Given that the social communication skills needed to blend in the community is absent, a child with autism is prone to being misunderstood by his or her peers and much more likely to be subjected to bullying in a “general school.” Also, many parents send their children to “general schools” not because the school has the right resources for their child’s education, but because the parents, still dealing with the “Stigma,” would rather dismiss the special needs of the child in order to force them to be like the others.

Children with autism may also go through such educational setting with high grades and excellent intellectual capabilities, but come out lacking the social skills needed to form friendships. Thus, without proper attention to their emotional needs at their childhood, adults with Autism tend to isolate themselves from the society, leading to many unacceptable and destructive behaviour patterns and lifestyles.

This conference will present ideas to address the transition stages of children with autism. Topics to be discussed will emphasize executive skills through communication and social development. Key Interactive sessions during the symposium will be geared towards educating, fostering healthy friendships and encouraging the development of independence.

2017 Autism Conference

MUSON Centre, Onikan, Lagos

Day 1 - Thursday 13th July 2016

9:00 – 10:00am	Registration	
10:00 – 10:15am	Opening Ceremony Special rendition / Performance	
10:15 – 10:25am	Keynote Address <i>CEO/MD, GTBank – Mr Segun Agbaje</i>	
10:25 – 10:30am	Introduction of Speakers and dignitaries	
10:30 - 10:40am	Re-cap of past Programs <i>Mrs Oyinate Adegite</i>	
10:40 – 11:00am	Autism Spectrum Disorders <i>Mrs. Dotun Akande</i>	
11:00 – 11:50pm	Opening plenary Beyond a Diagnosis of Autism: Stakeholders role in Autism care in a resource-challenged setting <i>Dr. Yewande Oshodi</i>	
11:50 – 12:00pm	Benefits of Early Intervention <i>Mrs Joyce Onafowokan</i> (Special Adviser to His Excellency, Governor of Lagos State on Social Development)	
12:00 – 1:00pm	LUNCH BREAK	
	Workshops/Special Sessions	
	Shell Hall	Agip Hall
1:00 – 3:00pm	Parents communication intervention plan for children and adolescents with ASD <i>Mrs Ololade Nnamani</i> & <i>Mrs Denise Hetherington</i>	Puberty and Autism: What to expect <i>Mrs Bolanle Adewole</i> & <i>Ms. Nandi Nelson</i>
3:00 – 5:00pm	Understanding social and emotional development from childhood to adolescence <i>Dr Charles Umeh</i> & <i>Mrs Aliya Redwine</i>	Addressing Social communications in children and Adults <i>Mrs Eniola Lahanmi</i> & <i>Mr Ade Otubanjo</i>

2017 Autism Conference

MUSON Centre, Onikan, Lagos

Day 2 - Friday 14th July 2016

9:00 – 10:00am	Registration	
10:00 – 10:10am	Re-cap of Day 1	
10:10 – 10:30am	Looking for Way Forward with Autism through Educational Partnerships and Research - Recent Findings <i>Dr Adeola Fayemi</i>	
	Workshops/Special Sessions	
	Shell Hall	Agip Hall
10:30am – 12:30pm	Teaching sex education to pre-teens <i>Mrs. Dotun Akande</i> & <i>Mr Bidemi Yinusa</i>	Helping your child during development <i>Dr Adeola Fayemi</i> & <i>Dr Anna Lamikanra</i>
12:30 – 1: 30pm	LUNCH	
1:30 – 3:30pm	Promoting Healthy Living and Wellness in Autism <i>Mrs Ijeoma Ogwu</i> & <i>Mr Femi Ladeinde</i>	Communication development and Inclusion <i>Dr Grace Bamigboye</i> & <i>Dr. Ladipo Sowunmi</i>
3:00 – 5:00pm	Panel Discussion The Road Towards Independence: What to expect <i>Panellists – (5 Parents & 5 specialists)</i>	
	End of Conference <i>GTBank</i>	



Presentations

Topic	Brief Introduction
Beyond a Diagnosis of Autism: Stakeholders role in Autism care in a resource-challenged setting	<p>This opening plenary session will highlight the role of the community, parents, family and caregivers in the social process of accepting the diagnosis of an affected individual. A discussion on the lack of proper services and proven methods to challenge stigmas associated with ASD and related disabilities.</p>
Parents communication intervention plan for children and adolescents with ASD	<p>Communication presents a challenge in individuals with ASD. This session will look at best practices for developing an intervention plan for children and adolescents with Autism Spectrum Disorders. Communicative disorders will be discussed.</p>
Puberty and Autism: What to expect	<p>Every parent needs to be prepared for the changes that come with puberty. At puberty, girls between ages 7-13 and boys between ages 9-15 go through physical changes when the body matures into an adult body. It is a natural process, which every child must go through. It affects boys and girls in different ways.</p> <p>The fluctuation of hormones however, can be quite difficult for a child with Autism Spectrum Disorder to manage. It can bring on mood changes, emotional imbalance, undesired behaviour and unusual feelings.</p> <p>One does not have to struggle through these times. Every tip you get on what to expect at puberty goes a long way. Equipping your child early and through every step of the way leads to desired expectations and manageable behaviour.</p>
Understanding social and emotional development from childhood to adolescence	<p>Adolescence is a time of big social and emotional development for your child. It helps to know what to expect and how to support your child through the changes. A group discussion on stages of emotional development and tips to help parents, teachers and caregivers survive this challenging time.</p>
Addressing Social communications in children and Adults	<p>This session will review executive function and self-regulation skills which are the mental processes that help children plan, focus attention, remember instructions, and juggle multiple tasks successfully.</p>



Presentations

Teaching sex education to pre-teens	<p>Sex education is a topic that is usually seen as a taboo, this is because in this part of the world we do not discuss it freely. Many families with typical children find it difficult teaching them the basics of sexuality not to talk of families dealing with children with special needs.</p> <p>The importance of teaching this to our children, teenagers and adolescents with Autism cannot be overemphasized especially in a preventive sense.</p> <p>Because our children on the spectrum are usually not very good at expressing their needs, it is important, to teach them the necessary skills ranging for self-care, sexuality and relationship development to propel them into adulthood and to prevent molestation.</p>
Communication development and Inclusion	<p>Education would only be fair if everyone is getting what they need in order to be successful and not everyone getting the same thing irrespective of their needs. Inclusion stands out tall in this wise because it concerns itself with “abilities” and not with “disabilities”, and provides equal opportunities as well as eradicating discrimination and intolerance.</p>
Promoting Healthy Living and Wellness in Autism	<p>Living a healthy lifestyle is important for individuals on the autism spectrum and their families. This session will provide families with information and resources on nutrition, keeping fit, and resting.</p>
Helping your child during development	<p>A discussion on understanding child development through the developmental stages will be explored. A further look at vocational study programs and attending colleges will be investigated.</p>
Looking for Way Forward with Autism through Educational Partnerships and Research - Recent Findings	<p>Reaching for partnerships can help connect resources and fill in services gaps. This presentations will review recent research findings and stories of success through building community and international partnerships.</p>
The Road Towards Independence: What to expect	<p>Invited speakers will answer questions and provide insight to participants on what to do as our children grow to adults.</p>



One-On-One Consultation/ Behavioural Clinic For Children & Adults

Parents who have children living with Autism will have the opportunity to bring their children to see specialists for assessment and or follow-up.

Date: Monday 17th – Saturday 22nd July, 2017
Venue: Digital Village, Secretariat Road (Behind Ikeja Mall), Alausa, Lagos
Time: 10am – 5pm each day

Timetable

9.00 – 10.00am	Enrolment			
10am – 1.00pm	Consultation Session			
	Speech Therapy	Paediatric	Audiology	Developmental Psychiatry
	Occupational Therapy	Clinical Psychology	Behaviour Analysis	Parent Counselling
1.00 – 2.00pm	Lunch Break			
2pm – 5.00pm	Consultation Session			
	Speech Therapy	Paediatric	Audiology	Developmental Psychiatry
	Occupational Therapy	Clinical Psychology	Behaviour Analysis	Parent Counselling

Appointment booking is required on www.gtbank.com/autism



Facilitators' Profiles



Mrs. Adedotun Akande is the Founder and Centre Director of Patrick Speech and Languages Centre, Ikeja, Lagos.

It can rightly be said that she revolutionised the Autism awareness campaign in Nigeria. Today Patricks stands tall as the pioneer special needs centre in Nigeria for the education of children with Autism, offering services such as speech therapy, occupational therapy, music therapy and behavioural therapy. The centre offers social skills building and play therapy. Mrs. Akande with her dependable team have successfully worked with and integrated over 40 children into mainstream school system even as she plans a new school facility that can accommodate and help more children and families.

She holds a BSc degree in Economics from the University of Ado Ekiti and has over the years attended numerous training programmes on autism and other developmental disorders at various International Institutions including but not limited to National Autistic Society (NAS) UK, Geneva Centre for Autism Canada, Western Psychological Services, USA and the Discovery Initiative South Africa. She also holds a diploma in Applied Behavioral Analysis from Florida Institute of Technology. She is an Advanced Certified Autism Specialist (ACAS), with Patricks being the first Nigerian Autism centre to be registered with the International Board of Credentialing and Continuing Education Standards (IBCCES).

Her deep involvement with Autism Awareness campaign in Nigeria has resulted the facilitation of training in various schools and organization locally. She has also been involved in autism awareness via films such as 'Silver Lining' which bagged an award at the Nigerian film festival in 2011. Her short film 'Demystifying Autism' was nominated for the AFRIFF Awards for best short film 2015. Mrs. Akande, who is a Cherie Blair Mentee, was also the Vlisco Woman of the year 2015 and 2016, an honour bestowed on her for the contributions she made to the growth of Autism awareness and treatment in Nigeria.

Dotun Akande is married with three children.



Dr. Anna Lamikanra, Executive Director, Blazing Trails International Center (BTIC) Autism Symposium Co-Developer. This is her fifth Orange Ribbon Initiative Symposium with GTBank. With many years of experience as a researcher, tenured professor, community advocate and training innovator, Dr. "Lam" works to carve-out opportunities for people with disabilities. She has published many articles on educational reform. Dr. Lam is interested in vocational education, training para-professionals and developing socializing programs for youth in transition and individuals with Autism Spectrum Disorder. She developed the curriculum for online certificate programs and a customer service training program for individuals with disabilities. Recently, Dr. Lamikanra presented at the World Psychiatry Association on the Orange Ribbon Initiative and the status of ASD research in Nigeria. Dr. Lamikanra earned the Ph. D from Iowa State University in Technology & Social Change and Global Education Policy. She is married to Dr. Olusola Lamikanra and they have a son, Olayinka.



Dr. Agboola Paul (M.B.Ch.B, FWACP, MPH) is a Chief Consultant Psychiatrist with the Neuropsychiatric Hospital, Aro Abeokuta Ogun State. Dr Agboola has been providing mental health services in the country since year 2000 and he became a fellow of the West African College of Physician in psychiatry in 2006. Dr Agboola was appointed as Honorary Consultant psychiatrist with East London Mental Health (NHS) Trust and worked at Coborn Center for Adolescent Mental Health Plaistow, East London in 2011. He also had clinical experience at the Royal Ottawa Mental Health Hospital Ontario Canada in 2014. He has been involved in past and ongoing studies in Child psychiatry in Nigeria with some publications in both local and international journals.

Dr. Agboola is an associate lecture with Olabisi Onabanjo University Ogun state responsible for training of medical students in mental health based on the clinical experience acquired both at home and abroad. He is a member of various medical associations locally and abroad including the Association of America Academy of Child and Adolescent Psychiatry since 2004.

Dr Agboola is married with children and he is currently one of the leading clinicians in child and adolescent mental health services in the country.



Dr Charles S. Umeh is a lecturer at the Department of Psychiatry, College of Medicine, University of Lagos. He is also a Consultant Clinical Psychologist at Lagos University Teaching Hospital (LUTH) Idi-Araba, Lagos. He has earlier worked as Clinical Psychologist at Catholic Consulting and Education Centre, Benin City where he majored in psychological assessment and management of individuals with psychological problems across all ages.

He earned a Master's degree in Clinical psychology from University of Ibadan and both B.Sc and Ph.D in Psychology and Clinical Psychology respectively from University of Lagos. His research interest is in assessment of psychological conditions across all ages with focus on children and young people. He is a member of several professional bodies including International Society for the Study of

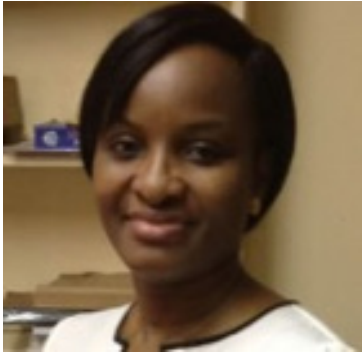
Behavioural Development (ISSBD). He is currently engaged in assessing children with learning disabilities.



Dr. Adeola O. Fayemi is the Director International Center, Office of International Programs Auburn University in Alabama, USA.

Dr. Fayemi is a well-versed leader in human resource development, court certified mediation, compliance administration and enforcement of federal, state and local laws, including the Americans with Disability Act (ADA), the Individuals with Disabilities Education Act (IDEA) and other laws designed to protect the rights of students with disabilities.

Prior to her work in Florida, Dr. Fayemi was a teacher at the University of Lagos International School and at the Army School of Education in Kwara State Nigeria. She is a constant advocate and believer that all children and adults can learn and rise to spectacular heights given the right conditions.



Dr. Yewande O. Oshodi MBBS(Lagos), MPH(Lagos), Mphil(Stellenbosch), FMCPSych (Nigeria), Cert Child & Adol. Psych (SA)

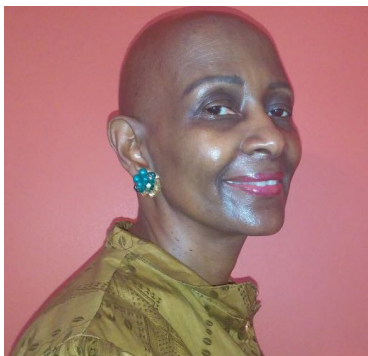
Dr Oshodi holds positions as a Consultant Child and Adolescent Psychiatrist & Senior Lecturer in the Department of Psychiatry of the Lagos University Teaching Hospital & College of Medicine University of Lagos, Nigeria respectively.

Yewande Oshodi’s main area of research interest is in the field Child and adolescent psychiatry. Her specific research activities have been in adolescent trauma, autism spectrum disorders school mental health and adolescent substance abuse.

Dr Oshodi has been the lead researcher on some funded research grants from the University of Lagos central research committee and also from the Lagos State research and development committee. Some of her research has looked into the area of bio marker and genetic polymorphism in a subset of autism spectrum disorder (ASD) children.

Dr Oshodi has contributed to the development of the College of Medicine Neurodevelopment and Autism Resource Centre (N- ARC) which has a key focus of driving increased autism research, service development and capacity training.

Dr Oshodi continues to play an active role in advocacy as she utilizes numerous platforms to create awareness of child and adolescent mental health challenges and preventative strategies which can be deployed within various sectors in the community.



Denise Hetherington has had the privilege of working as a Speech Pathologist for the Chicago Public Schools. She has serviced students from preschool to 12th grade diagnosed with speech disorders as the primary disability and speech as a related service, to include populations diagnosed as Learning Disabled, Behavior Disordered, Emotionally Disturbed, Trainable Mentally Handicapped, Severe to Profound Cognitively Delayed, Hearing Impaired, Selective Mutism, Dyslexic, Hearing Impaired, Attention Deficit, and Autistic.

Denise Hetherington received her Bachelor’s Degree in Communications at University of Illinois Chicago Circle in 1978 and a Master’s Degree in Speech Pathology from University of Iowa in 1981. Denise Hetherington recently retired from the Chicago Public Schools June 27th, 2015. After 34 years of service, she is looking forward to utilizing and sharing her

knowledge and experiences to improve communication skills for individuals locally and abroad.



Aliya Gordon-Redwine is a Board Certified Behavior Analyst (BCaBA). Aliya Gordon-Redwine is a Board Certified Behavior Analyst (BCaBA) and formally a certified emergency medical technician (EMT).

Mrs. Redwine graduated from University of Colorado, with a major in psychology. In addition in trying to make the world a better place one person at a time, she is a graduate student at University of Pittsburgh. Although English is her first language, she is well equipped to speak with you in American Sign Language, Spanish and Hebrew.

She has immense experience working with individuals on the Autism

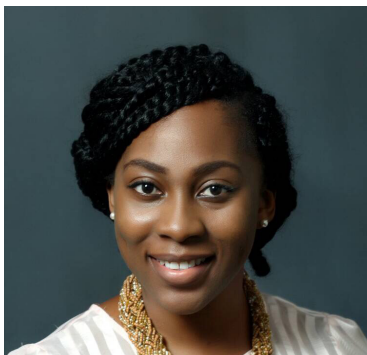
spectrum, deaf and hard of hearing, a variety of learning disabilities as an ABA tutor. Mrs. Redwine writes functional behavioral assessments and behavior modification plans. She enjoys reading and traveling.



CAMPBELL, Elizabeth Adebola MBBS(Ibadan), MWACP(West Africa), FMCPsych(Nigeria) is a Consultant Psychiatrist with the Lagos University Teaching Hospital. She serves as a Child and Adolescent Psychiatrist (with certification in child and adolescent psychiatry in view) in the Child and Adolescent mental Health Unit. She is involved in caring for individuals with autism and other mental health challenges.

Elizabeth has been involved in the Orange ribbon initiative since 2013 coordinating the activities at the one-on-one consultation. She is a member of the Neurodevelopmental and Autism Resource centre of the College of Medicine, University of Lagos.

Her interest is not only limited to Child and Adolescent Psychiatry but spans other aspects of psychiatry with a keen interest in rehabilitation of chronic medical and psychiatric conditions. She has conducted series of research in these areas with many outreaches across different communities and age groups with presentations at International Conferences with Published articles in Local and International Journals. Eniola Lahanmi is a speech and language therapist consulting at special schools in Lagos. She currently provides speech and language therapy to children with developmental disorders as well as children for whom speech disorders are the only concern.



Eniola Lahanmi received her Bachelor's degree in Psychology at the Rochester Institute of Technology in 2009 and subsequently worked with a centre for children with autism in Boston. She moved back to Nigeria and worked as a behavior therapist for children with developmental disorders before going to the UK to obtain a masters degree in speech and language therapy at the University of Reading.

Eniola Lahanmi currently provides speech therapy for children and training for parents.



Ms. Nandi D. Nelson LMSW, BCBA has sound knowledge regarding etiology, characteristics of autism spectrum disorder and intellectual disability.

Ability to provide behavioral interventions to clients and families. Excellent communication and writing skills. Ability to tailor programming to client and family needs. Ability to build rapport with clients, families, and service providers. Excellent analytical and critical thinking skills.

Ability to teach behavioral analytic theory and concepts to RBT's, aspiring BCBA's, BCaBA's, teachers/staff and parents. Objective: Obtain practical experience that will aid the development of my knowledge in the field of behavior analysis.

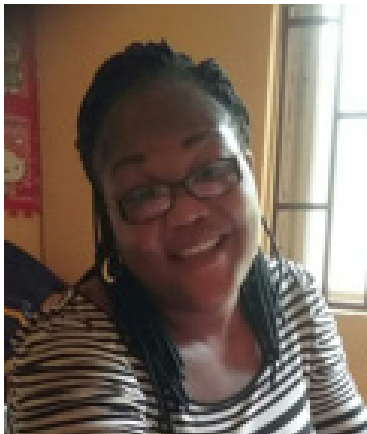




Mr. Ade Otubanjo is a Nigerian-born, licensed Speech-Language Pathologist. He received his undergraduate education from The City University of New York, one of the largest public universities in New York City. He attended New York University where he completed a Masters in Speech-Language and Hearing.

For the past six years, Ade has run Simply Speaking SLP, PLLC, providing treatment for children with developmental disorders associated with Autism and other communication-related disorders (e.g. Down's Syndrome, stroke patients, stutterers, etc.). Ade has

worked with the Association For MetroArea Autistic Children Inc. (AMAC, New York), providing speech therapy and preparing to preschool and school age children. Additionally, he works as a therapeutic consultant within the New York City Department of Education public schools. Ade works closely with stroke patients, providing therapy and support to re-establish communication.

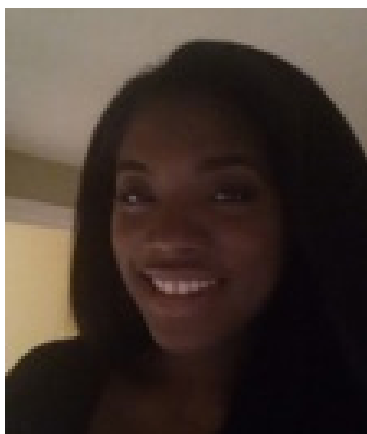


Ololade Olayinka Nnamani is a licensed speech/language pathologist and a special educator . She obtained her Bachelor's and Master's degree in Special Education/ Communication and Language arts, Speech Pathology and Clinical Audiology from the prestigious University of Ibadan. Oyo state. Nigeria.

Ololade Olayinka Nnamani has been involved with children with special needs for more than 15 years. She has worked as a classroom teacher for children with learning disabilities and as a special teacher/communication instructor for children with hearing impairment in Ogun state. She is currently a senior Speech and Language Pathologist at Child and Adolescent unit of Neuropsychiatric hospital Aro, Abeokuta . Ogun State. Where she is involved in rendering speech therapy services for children with autism, cerebral palsy, ADHD, intellectual disability and adults with cerebral vascular accidents(CVA). She is a member of Medical Rehabilitation Therapists Board of Nigeria, Speech Pathologist and Audiologist Association of

Nigeria, and National Association of Special Education Teachers of Nigeria.

Ololade Olayinka Nnamani is an advocate of inclusive education for children with special needs.



Tomi Agboola-Odeleye is a Speech and Language Therapist at the University College London.

She is a registered Speech Therapist with the Health and Care Professions Council and a member of the Royal College of Speech and Language Therapists. Tomi's years of experience as a Speech Therapist has included paediatric work with pre schoolers, primary, and secondary school students within special and mainstream schools. In addition, she has worked within the NHS with adults who have learning difficulties and swallowing disorders.

Tomi specialises in working with preschool children and children with social communication difficulties (including (ASD). As well as working independently, Tomi currently works part time as a Highly Specialist Speech and Language Therapist for children with ASD and

ADHD for a local authority in London. She is trained to assess children's social communication needs as part of a multiagency diagnostic team.

Additionally, Tomi has a special interest in children with hearing impairments and has completed her BSL level 2 with the intention of continuing her studies and work within this field.



Dr. Oladipo Adeolu Sowunmi qualified as a medical doctor from the Olabisi Onobanjo University Ago-Iwoye in 2006. He proceeded to the University College Hospital Ibadan for his Medical Internship in 2007. In 2008, he served the country at the University College Hospital Ibadan, Department of Paediatrics AIDS Prevention Initiative of Nigeria-President's Emergency Programme for AIDS Relieve (APIN-PEPPER) in 2008.

Furthermore, he proceeded to the Neuropsychiatric Hospital Aro Abeokuta for his residency training in psychiatry and obtained his fellowship in psychiatry at both the West and National postgraduate college of physicians in 2015 and 2016 respectively.

He was appointed as a consultant emergency psychiatrist at the Neuropsychiatric Hospital Aro Abeokuta in 2016 with special interest in child psychiatry, drug abuse and genetics. He has published papers in international journals. He is happily married with children.



Mrs. Bolanle Adewole, an Autism Specialist is the founder and executive director of The Learning Place Centre (TLP Centre), as well as The Learning Place Montessori school, in Lekki, Lagos, Nigeria. She certified in the theory and practice of the primary Montessori methods from St. Nicholas Montessori Centre, London and in the Elementary Montessori methods from North American Montessori Centre, Canada. She further qualified as an Applied Behaviour Analyst from Florida Institute of Technology, USA. She believes no child should be left behind and that every child should be given an equal opportunity to learn and attain full potential. She continuously engages in the care and fluent integration of the differently able into mainstream schools. She creates and implements the use of Individual Educational Programs for challenged children and closely monitors the same for updates and reviews. She leads a team of experienced therapists and has worked with diverse categories of

children for over two decades; she has extensively served them on three continents, Europe, North America and Africa. She attends various enriching educational courses and conferences to date and engages in various charitable outreach activities. To date, she has influenced the education of over 5,000 indigent children in Nigeria.

A renowned speaker and teacher, Bolanle, belongs to Professional bodies including Autism Society of West Africa (ASWA), Autism Society in USA, American Montessori Society (AMS), International Montessori Council (IMC), Association of Montessori Educators in Nigeria (AMEN)

Bolanle is happily married and blessed with two sons, one with Autism spectrum disorder.



Ijeoma Ugwu is a Food Scientist cum Nutritionist. Founder Brainfoods for Guts and Psychology (Brainfoodsng.com). She is passionate about nutrition as a tool for management of chronic illnesses.

She doubles as a nutritional therapist and health food creator. She advocates for the healing powers of food applying her knowledge of Food, its nutrients and sciences. Her special interest lies in the use of nutrition in the management of Autism Spectrum Disorder and related conditions alongside other complementary therapies.

Ijeoma is particularly interested in providing safe local alternatives to the nutritional needs of individuals living with autism. She strives to bridge the gap between the hypoallergenic feeding style demanded by their physiological make up and the availability of such foods in our locality.

Through her daughter, she has risen to present to families affected by autism, the beacon of hope through nutrition.

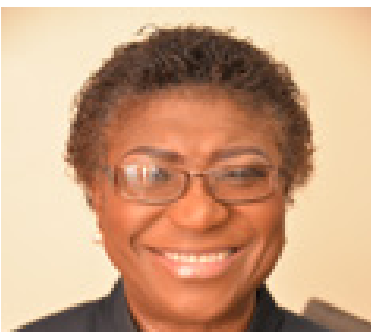


Dr. Grace Ojeamiren-Bamigboye. Ph.D. CCC-SLP is a Consultant Speech-Language Pathologist; Specialist in Speech and Language Disorders/Bilingualism (American Sign Language). She is registered with the Medical Rehabilitation Therapists (Registration) Board of Nigeria (www.mrtbnigeria.org.ng) and is a member/PRO of Speech Pathology and Audiology Association of Nigeria. (<http://span.org.ng>).

Dr. Grace Ojeamiren-Bamigboye has more than twenty years' experience of working with children with special needs and has a special interest in speech and language disorders and bilingualism.

Dr. Grace Ojeamiren-Bamigboye completed her doctoral studies in Speech Pathology with The University of Ibadan and has a Certificate in Autism Spectrum Disorders from University of Texas, Arlington, USA. She has produced several published works including research papers, speech and language therapy assessments and Articles.

Dr. Grace Ojeamiren-Bamigboye had received awards from Patrick Speech and Languages Center, Parents Against Autism Initiative and The Woman of Merit Gold Awards in recognition of her longstanding and dedicated contributions to the Nigeria Autism Community and the field of Special Education Needs. Also, she is a resource person to the National Economic Summit Group on Neuroscience and Early Childhood Development.



Mrs Joyce Onafowokan is a certified Early Intervention professional and a passionate advocate of children living with disabilities. She started her career in Nigeria as a Public Relations Officer at the Delta Steel Company before leaving for the United States of America where she rendered 26 years meritorious years.

She served as Service Coordinator at the Massachusetts Department of Mental Retardation and the Program Supervisor for the Prevention of Cruelty to Children in Massachusetts. More of her services were recorded at the Massachusetts Society for the Prevention of Cruelty to Children and Healthy Families – a program for pregnant teens and teen parents.

Due to her passion for helping children and the disadvantaged, she volunteered her services with families and worked as an Early Intervention Specialist during this period. She was educated at Federal Government College Warri and obtained her first degree from the University of Ife before receiving a Master's Degree from Smith College Northampton, Massachusetts in Education and Child Study.

Mrs Onafowokan has received various awards for her contribution to her profession and is married; blessed with two sons and a daughter who have between them, attended London School of Economics, Amherst College, Harvard and Columbia University.

She is an avid reader and loves to travel and dance.



Mr. Yinusa Abidemi is a graduate of Economics from Lagos State University. He also holds a diploma in Child Psychology from Stonebridge College, United Kingdom. He obtained his postgraduate diploma in Education from National Open University and is a Certified Autism Specialist from International Board of Credentialing and Continuing Education Standard. He has attended various training programmes on the different aspects of Autism since 2007 including behavior modification, speech and communication strategies, sensory integration, occupational therapy, social skill building, attention deficit disorder, play therapy and cognitive development.

Bidemi has worked with children living with Autism and other related disabilities for over 10 years and has supported many families with therapy options that has helped integrate their children and adults into the community. He is currently the Head of School at Patrick Speech and Languages Centre.



Certificate In Autism Spectrum Disorder (ASD) Programme 2017/2018

Course Name	Location	Date	Fee
Introduction to ASD	Online	06 Sept - 20 Sept 2017	\$179.00
Ethnic and Cultural Issues in the treatment of ASD	Online	27 Sept – 11 Oct 2017	\$179.00
Alternative Communication Techniques and Literacy Acquisition for Non-Verbal Individuals	Online	25 Oct – 08 Nov 2017	\$179.00
Developing the Support Network for Special Needs Providers	Online	29 Nov - 13 Dec 2017	\$179.00
Portfolio: Techniques for Socializing Individuals with ASD and/or Special Needs	Online	10 Jan – 24 Jan 2018	\$179.00

This Certificate Program is an Online Webinar delivered by University of Texas, Arlington
Visit www.uta.edu/ded/ced/asd

Anyone who works or has worked with individuals with Autism knows that it can be very time-consuming developing an understanding of the disorder and the co-morbidities associated with the wide spectrum of Autism. We developed the Autism Spectrum Disorder Awareness Certificate to provide therapists and caregivers the introduction, background, aptitude and skills needed to work effectively with this growing special needs population. This Certificate requires the completion of 4 required courses and a Portfolio Project.

Benefits of This Certificate:

Knowledge of management of the disorder in educational institutions
Learn alternative communication techniques and theory
Create opportunities to develop life-long professional networks

Who Can Benefit?

- Therapists
- Caregivers
- Vocational Rehab counsellors
- Paraprofessionals
- Educators
- Care Attendants
- Speech and Language Pathologists
- Physical and Occupational Therapists
- Other Professionals in related fields

Course: Alternative Communication Techniques and Literacy Acquisition for Non-Verbal Individuals

This course will be an overview of the methods and techniques used to help individuals with ASD communicate. Connections between reading, writing, communication and instruction, adaptive devices and software dedicated communication devices will be examined. The course will focus primarily on classroom use of American Sign Language application and its direct and indirect impact on the delivery of services for students with ASD.

Upon Successful Completion of this course participants will be able to:

- Use sign language creatively
- Develop a picture system to relay information
- Assist overall communication style with special needs individuals

Course: Developing the Support Network for Special Needs Providers

New and Experienced special needs providers will benefit from this course by learning new strategies for motivating, managing and communicating the concerns of clients and consumers. Seasoned providers will gain new perspectives on their role for providing support to individuals with ASD. A portion of the course will be dedicated to exploring questions such as what happens with adult individuals with ASD and examining the unique stressors experienced by parents, extended family and caregivers.

Upon Successful Completion of this course participants will be able to:

- Build High Performance Teams
- Map Possibilities for Adults
- Network Effectively

Course: Portfolio Project Techniques for Socializing Individuals with ASD and/or Special Needs

Students will develop a treatment schedule detailing the technologies and teaching tools used to help ASD individuals become more social. The schedule must outline a week of activities including strategies. This project helps the participant plan, document and track winning learning strategies for motivating, managing and communicating with individuals with ASD.

Experienced special needs providers may be exempt from the ASD Portfolio Project requirement upon submission of complete documentation of strategies and technologies used to motivate socializing skills with ASD/special needs individuals. Previous documentation may be turned in a notebook format for instructor's approval.

Upon Successful Completion of the Portfolio Project participants will be able to:

- Build Best Practices
- Document Social Successes
- Develop a Blueprint for Success



Testimonial

"My name is Princess Oritoke Abioye Aluko-Olokun (nee Laoye). I retired after 35 years of meritorious service as a radiographer. I met my husband in 1971 and got married in 1972. Life was blissful and beautiful, we had three children in quick succession until our last baby came in 1979. The rhythm changed when he was a year and a half old.

My last child, Oluwaseun was born on the 29th Sept. 1979. He was fair skinned, handsome and every inch like his dad. His father doted on him, loved cuddling him especially when he started babbling his first few words and reciting the alphabets after his dad, it was fun. Seun walked before he turned one, then came the viral infections and he became hyperactive, was unable to talk or hear us, was always angry and hitting his head against objects. I cried, fasted, prayed, it was traumatic, no one understood what autism was at the time.

We searched for help at the state hospitals including LUTH, several tests were conducted, some of the doctors suggested subnormality while others recommended psychiatric hospital, Yaba. Nothing was detected with his speech or hearing centres.

At home, my husband called me a witch and other names, I was humiliated and beaten. I was eventually ejected from my matrimonial home and divorce followed later in 1998, since then I have been a single mother taking care of my son. Before the break up, my husband sought help of herbalists and we went to white garment churches where all manner of demands were placed on us to cure our son, but his condition deteriorated after each experience. My finances depleted as I continued to seek for the best care for him and went to therapists who couldn't offer any help.

My brother, living in the US eventually suggested to me for the first time that my son could be having autism and a friend gave me a magazine where I

read an article on Patrick Speech and Languages Centre. My son got scholarship and started school as an adult during August summer coaching.

Through the GTBank Orange Ribbon Initiative trainings and parent support group meetings on Autism support, I have become a better person at managing him and not forcing my will on him. Today, he could lay his bed, wash plates, fix loose louver blades, bath and dress himself with matching shoes. His confidence has improved and now he won't take it kindly if being treated as a kid. Seun is also very security conscious and would ensure every door and window is locked before retiring for the night. At school, he paints, fixes puzzles, carry out work at the garden and is open to new tasks and skills everyday as his instructors help to discover them.

To mothers out there, never give up, always seek for help early and don't hide your child. Children with autism are known to live normal lives if they get early intervention.

Let me say my 37 years journey with autism through my son has been a discovery of denial, pain, acceptance and love. Autism is not a curse but a difference. There is always ability in disability, so respect children with special needs and give them skills and education. I thank God for being my strength throughout the 37 years journey, it has not been easy, but I'm grateful at 70."



GTBank: A platform for enriching lives

Guaranty Trust Bank plc is a foremost Financial Institution with business outlays spanning Anglophone and Francophone West Africa, East Africa and Europe. The Bank presently has an Asset Base of over N3.11trillion and employs over 10,000 professionals in Nigeria, Cote D'Ivoire, Gambia, Ghana, Liberia, Kenya, Rwanda, Uganda, Sierra Leone and the United Kingdom.

Established in 1990, on a foundation of excellence, professionalism and best practices, the Bank's consistent delivery of innovative financial solutions and exceptional customer experiences has enabled it to record year on year growth in clientele base and key financial indices since inception. The Bank's operation style, staff conduct and service delivery models are built on 8 core principles; Simplicity, Professionalism, Service, Friendliness, Excellence, Trustworthiness, Social Responsibility and Innovation. These Principles are known as The Orange Rules which reflects the Bank's vibrant Orange corporate colour.

At GTBank we believe that of far greater importance to us, beyond providing first class

service, is the role we play in developing our host communities. Hence, Social Responsibility forms a critical part of the GTBank business model and a significant share of our annual profit is channelled to strategic high impact projects that improve Education, Community Development, the Art and Environment.

The Bank's achievements over the years has led to numerous accolades in recognition of excellent service delivery, innovation, corporate social responsibility and good corporate governance. In 2016, GTBank received several national and international awards for product and service innovation and sound corporate governance practices, such as: The Best Banking Group by World Finance Magazine, The Most Innovative African Bank by The African Banker Magazine, and The Best Bank in Nigeria and Best Digital Bank in Africa by Euromoney Magazine. The Bank was also recognised as the 2016 Most Innovative Ai SRI 30 Company at the African Investor Awards and dominated the E-payment space by taking home six awards at the Electronic Payment Incentive Scheme (EPIS) awards organised by the Central Bank of Nigeria (CBN) in conjunction with the Nigeria Inter-bank Settlement System (NIBSS) for the 2016 calendar year.

At Guaranty Trust Bank plc, our vision is to build an enduring Proudly African and Truly International Institution that plays a fundamental role as a Platform for Enriching Lives by building strong, value adding relationships with our customers, stakeholders and the communities in which we operate.

GUARANTY TRUST BANK PLC

Plot 635, Akin Adesola Street
Victoria Island, Lagos

Phone: **234.1. 2714580-9, 2715227, 2622650-64,**

Fax: **234-1-2715227, 2622670**

E-mail: **cea@gtbank.com**

Website: **www.gtbank.com**



Our Partners

Blazing Trails International, Texas, USA

www.blazingtrailscenter.com

Blazing Trails International Center believes that life is a journey. We respect that everyone's journey is different and each person has varying abilities. At Blazing Trails, we are passionate about teaching individuals with disabilities how to prepare for, gain or retain meaningful employment.

Blazing Trails is an outcome based community rehabilitation service provider, specializing in training and education. Our clients are encouraged to set goals and to focus on



attainable destinations. We are dedicated to assisting individuals living with disabilities navigate some of the challenges along life's pathway.

5001 Spring Valley Road, Ste 400
Dallas, TX 75244
Office: +1 972-538-5943;
Email: info@blazingtrailscenter.com

Patrick Speech & Languages Center, Lagos, Nigeria

www.pslcautism-ng.org

Patrick Speech and Language Centre (PSLC) was established in 2006 as the first school in Nigeria dedicated to educating children and adults with Autism. At that time, approximately 80% of Nigerian children with autism did not have access to education, health, or social services.

Patrick Speech and Language Centre is the first Nigerian Autism centre to be registered with the International Board of Credentialing and Continuing Education Standards (IBCCES) and



is also registered with the Association of Christian School International (ASCI) and Association of Private Educators in Nigeria (APEN).

Email: patrickspeech1@gmail.com

Our Partners

Neurodevelopment and Autism Research Center (NARC) of College of Medicine University of Lagos (CMUL)

THE NARC-CMUL is a center for research in autism and developmental disorders. The center is established as a one stop shop for diagnosis, care, support and research. Though the center has been in function since 2014 and it has now attained a formal status of a Center for research and excellence in the University of Lagos.

The center welcomes stakeholders who require



our services or anyone who desires to be involved in our work as partners, volunteers, donors or researchers.

For further enquiry contact autismservices@cmul.edu.ng



Neuropsychiatric Hospital, Abeokuta, Nigeria www.neuroaro.com

The Neuropsychiatric Hospital, Aro, Abeokuta, Nigeria came into existence in 1954; but its progenitor, then an asylum, now called Lantoro Annex, came into existence on the 13th of April, 1944.

The Child and adolescent mental health services (CAMHS) unit of the hospital was established

in 2009 with a purpose-built one-stop treatment complex for children with different neuropsychiatric conditions. The unit provides services for emergency assessments, outpatient clinics, In-patient admissions, community-based mental health services (integrated into Aro primary care mental health programme), school-based mental health services through trained guidance and counselor school teachers under the employment of Ogun State Teaching Service Commission / Ogun State Ministry of Education. Currently the CAMHS unit is run by 3 Consultant Psychiatrists, a Consultant Neurologist, Resident doctors, Psychiatric nurses, 2 Speech and Language therapists, Occupational therapists, Physiotherapists, Social workers, clinical psychologists; and collaborates with hospitals within and outside the country. The hospital was ranked as number one hospital in Nigeria by the Webometric ranking of World hospitals from 2013 to date.

Autism Directory

CENTRE	ADDRESS	CONTACT PERSON	CONTACT NUMBER	EMAIL/WEBSITE
AUDIOLOGICAL CENTRE				
Nigerian Army Audiological Centre	68 Nigerian Army Reference Hospital Yaba, Lagos			
CENTRES FOR CHILDREN				
Blazing Heart Autism Centre	House 9, 88/89, Dr.Peter Odili Road, Port Harcourt, Rivers State.	Beauty Kumesine	08038852183; 08051624291	blazingheartautism@gmail.com; Info@blazingheartautism.org; www.blazingheartautism.org
Boyi Special Centre for Children BSCC	2a SMC Quarters Barnawa Kaduna		08039607012; 08039000000	
Centre for Autism and Developmental Disabilities (CADD)	1 Chika Omo Street, Behind Lion House, Off Nnebisi Road, Asaba, Delta State		08039112839; 08061148025	caddng@yahoo.com
Children Development Center (CDC)	31 Modupe Street, off Adeniran Ogunsanya Street, Surulere, Lagos State		01-4702688; 08023176525	www.cdcafrica.org
Domlash Development Institute(DDI), Abuja			08028276957; 08052000000	
Eleve Great Minds (Centre for Special Needs)	46b Oremoji Street, Moremi,Iloro, Ile-Ife.	Mercy Igudia	07032800999	
Hope House School	Pope John Paul Street Maitama, Abuja			info@hopehouseschoolonline.com
NWATU Autism Foundation	4, Idowu Rufai Street, Ago Palace Way, Okota, Lagos. P.M.B 039, Festac Town, Lagos State		01-8992331;	autism4nigeria@yahoo.co.uk
OLG Health Foundation and Autism Centre	8 Faith Avenue, Woji Avenue, Port Harcourt, Rivers State.		08058458995	chidi_izuwah@yahoo.co.uk, www.olgautismnigeria.org.ng
Patrick Speech and Languages Centre	13B Remi Fani-Kayode Street, GRA Ikeja, Lagos		08030564409	patrickspeech1@gmail.com; www.pslcautism-ng.org

CENTRE	ADDRESS	CONTACT PERSON	CONTACT NUMBER	EMAIL/WEBSITE
The Children's Practice - Where you get: Experience, Cutting Edge Care and Dedication	No 25 Raymond Njokwu Street, SW Ikoyi, Lagos.	Dr. Alexandra Laraba Anga	08033019865; 08180127108; 07055028215	www.childrenspractice.com
The Learning Place Centre (TLPC)	18 Chris Maduike Drive Lekki Phase 1, Lagos	Mrs. Giwa Osagie	01-4611941;	
Toluwani Special Needs Center	2, Somorin Street, Obantoko, Abeokuta, Ogun State.		01-8930723	
Willing Health Advocacy & Training Support	45 Airport Road, Benin City, Edo State		07046314389;	willinghealth@yahoo.com
Zamarr Institute Abuja	27 Libreville Street, Off Aminu Kano Crescent, Wuse II, FCT Abuja.	Mrs Ronke Katagum	01-3425557	info@zamarrinstitute.org, zamarrinstitute@yahoo.com, www.zamarrinstitute.org
CHILD AND ADOLESCENT PSYCHIATRY SERVICES				
Child and Adolescent Mental Health Center	Federal Neuropsychiatric Hospital Yaba; Oshodi branch, off Agege motor road	Dr Oluwayemi Ogun.		
Department of Psychiatry	College of Medicine, University of Lagos, Idi Ara, Lagos; Lagos University teaching hospital (LUTH)	Dr Yewande Oshodi		
Child and Adolescent Unit	The Neuropsychiatric Hospital, Aro, Abeokuta, Ogun State	Dr Paul Agboola		www.neuroaro.com
INTERVENTION SERVICES				
Acceleration Therapy	74 Community Road, Akoka Yaba, Lagos State	Dr. Helen Nwanze	08023151105	acceltherapy@yahoo.com
ASAP (Autism Spectrum Adaptive Programme)	11 Sultana Street, Steynsrust. Somerset West, 7130. Western Cape Province, South Africa.	Linda Jimmy	+27-844564895;	www.asap-linda-herbert.com
Autism Associates	1 Bode Thomas Street, off Bode Thomas Road. Onipan, Lagos State		+27-820865937	info@autismassociatesnigeria.org, autismassociateds@yahoo.co.uk, www.autismassociatesnigeria.org
Brain and Body Solutions Limited	39 Suez Crescent, Wuse Zone 4, Abuja	Dr Dayo Ajibade	01-8506354; 08039112839	brainandbodycentre@gmail.com

CENTRE	ADDRESS	CONTACT PERSON	CONTACT NUMBER	EMAIL/WEBSITE
Smartbase Services	23 Obalende Road, S.W Ikoyi. Lagos State		08102007700; 07038646743	www.smartbaseng.com
SNAP (Special Needs Adaptive Program)	9 De Dam, Vierlande, Durbanville. South Africa		01-2670032, 08023790236	www.snap.org.za
NUTRITIONISTS				
Ideal Eagle Hospital	Sanusi Fafunwa Street, Victoria Island, Lagos State.	Dr. Carla Chidiac	01-7757077; 08034000911	ieh@hyperia.com
OLG Health Foundation and Autism Centre	8 Faith Avenue, Woji Avenue, Port Harcourt, Rivers State		08030564409	chidi_izuwah@yahoo.co.uk
Sherese Ijewere			07032713731	caribbeanhn@gmail.com; www.caribhealthng.com
PAEDIATRICIANS				
Lifeline Children's Hospital Lekki	1a Augustine Anozie Street. Lekki Phase 1, Lagos State.		01-7944310; 07086403513	lekki@lchnigeria.com, www.lchnigeria.com
Lifeline Children's Hospital Surulere	133 Ogunlana Drive, Surulere, Lagos State		01-7733265; 0708603512	surulere@lchnigeria.com
The Premier Specialist Hospital	7 Ogalade Close, Victoria Island, Lagos State		01-7741463	www.premierspecialsng.org
SCHOOLS				
Children's International School (CIS)	1 Sikiru Alade Oloko Crescent off Road 14, Lekki 1, Lagos State.		01-8045277; 01-7918646	www.cislagos.com
Casa Dei Bambini	10b Onikepo Akande/ Road 12, Lekki 1, Lagos State		01-2710476; 01-2713144	casadeibambinilekki@yahoo.com
Children's International School (CIS)	1 Sikiru Alade Oloko Crescent off Road 14, Lekki 1, Lagos State		01-8045277; 01-7918646	www.cislagos.com
Cita International School	Rumuogba Housing Estate, P.O Box 6595 Port Harcourt, Rivers State.		01-84774655	info@citainternationalschool.org
Grange School	6, Harold Sodipo Crescent, Ikeja. GRA. Lagos State			info@grangeschool.com
Greater Scholars Intl School	Road 41, Abraham Adesanya Estate, Ajah. Lagos State		08029660967; 01-8042018	admissions@greaterscholars.com

CENTRE	ADDRESS	CONTACT PERSON	CONTACT NUMBER	EMAIL/WEBSITE
Greensprings School	32, Olatunde Ayoola Avenue, Anthony, Lagos. P.O Box 4801K Ikeja. Lagos State.		01-2793728; 07029579731	info.anthony@greenspringsschool.com
Greensprings School	Ibeju-Lekki (After Crown Estate). Awoyaya. Lagos State		01-8776870; 07029579748	info.lekki@greenspringsschool.com
Greenwood House	1, Greenwood House Road, Off Laiyi-Ajayi Street, Park View Estate. Ikoyi, Lagos			
Hillcrest High School	Ekorinim G.P.O Box 462 Calabar			
Lagos Preparatory School	11c/12, Bayo Kuku Street. Ikoyi. Lagos			www.lagosprepikoyi.com.ng
Meadow Hall School	Alma Beach Estate. Lekki Epe Expressway, Lagos State		08073000556; 08025042053	www.meadowhallschool.com
Premier International School	26, N'djemena Crescent, P.M.B 5043, Wuse II, Abuja		08069781274; 07041512778	info@premierinternationalschool.org
Salem Montessori Centre	1 Aihie Close, Off Ijeboh Street off Airport Road, GRA, Benin. Edo State.	Omon Eboreime	08066457648	
Temple Prep	213 Ikorodu Road. Ilupeju. Lagos State		01-5550936; 08037217325	www.templeprepschool.com
The Learning Place	Plot 7, Kenneth Agbakuru Street off Rasheed Alaba Williams Street Road 14, Lekki Phase 1. Lagos		01-8797846; 01-2706224	www.thelearningplaceng.com
Toluwani Special Needs Center (TSCN)	No 2 Ilupeju, Quarters, Afisuru House. Aregbe, Obantoko, Abeokuta, Ogun State		08086012440; 07035932069	info@japhethng.org
Treasure House Schools	63A Coker Road. Ilupeju, Lagos State		01-7613037	www.treasurehouseschools.com



CENTRE	ADDRESS	CONTACT PERSON	CONTACT NUMBER	EMAIL/WEBSITE
SPEECH THERAPISTS				
Friends Consult-Independent Speech & Language Therapy Services, BSA	10 Owoduni Street, Off Amore Street. Off Toyin Street Ikeja. Lagos.	Mrs. Grace Bamgboye	08055780090	
J&J Calvary Hearing & Speech Centre	8 Sura Mogaji Street via Association Avenue, Ilupeju, Lagos State		08033445445; 08023959106	jjcalvary@yahoo.com
Mrs. Esosa Evbonaye			+442089840188, +447917873196	linyuki2002@yahoo.co.uk
SOCIETIES				
African Network for the Prevention and Protection against Abuse and Neglect	43 Lumumba Street New Haven, Enugu.	Professor Ebigbo	08029619581	
Defeat Autism in Nigeria (DAIN)		Dr. Doris Izuwah		doriszuwah@yahoo.com
Nigerian Autistic Society	P.O Box 7173, Wuse, Abuja		09-5236670	
SUPPLIERS				
Esther's Glutenfree & Healthfood (Mrs. Tonye Edosomwan)			08023039871	Facebook: Esther Glutenfree-Healthfood
Mrs. Sandra Mujakperuo (Carries GFCE Foods and Supplements)			08065259897	
Nutri Center	3, Tony Oghenejode Close, Off Omorinre Johnson Street, Lekki Phase 1. Lagos State		08137271701; 08080350066; 01-7606025	info@nutricentreng.com
OLG Health Foundation and Autism Centre (Carries GFCE foods & supplements)	8 Faith Avenue Woji, Port Harcourt, Rivers State.		08030564409	chidi_izuwah@yahoo.co.uk; www.olgautismnigeria.org.ng
Rhimamory Resources			08109788217	info@rhimamory.com; www.rhimamory.com

Notes



Notes



Notes





Guaranty Trust Bank plc
RC 152321

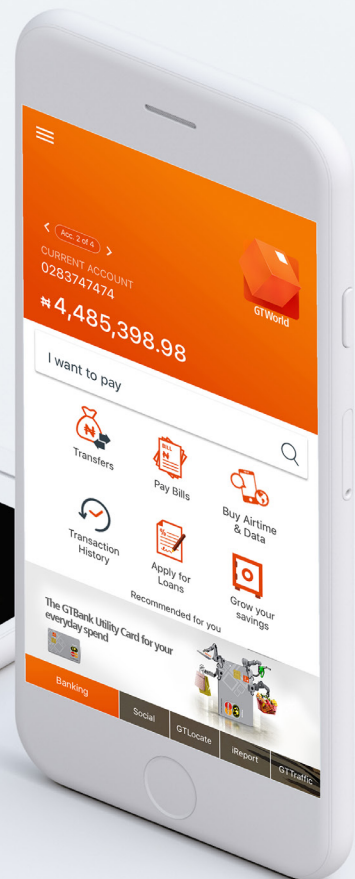


GTWorld

It's Banking; Only Easier!

With GTWorld, you have a Mobile Banking App that is designed to cater to all that's important to you easily and seamlessly. The facial recognition feature means that you now have mobile banking App that recognizes you and adapts to how and when you want to bank.

- Authenticate transactions with your face or fingerprint
- Make self transfers without signing in
- Send money to people using their mobile numbers



+234 700 GTCONNECT or +234 700 482666328,
+234 1 448 0000, +234 80 3900 3900, +234 80 2900 2900

Connect with us





Guaranty Trust Bank plc
RC 152321

Proudly African Truly International

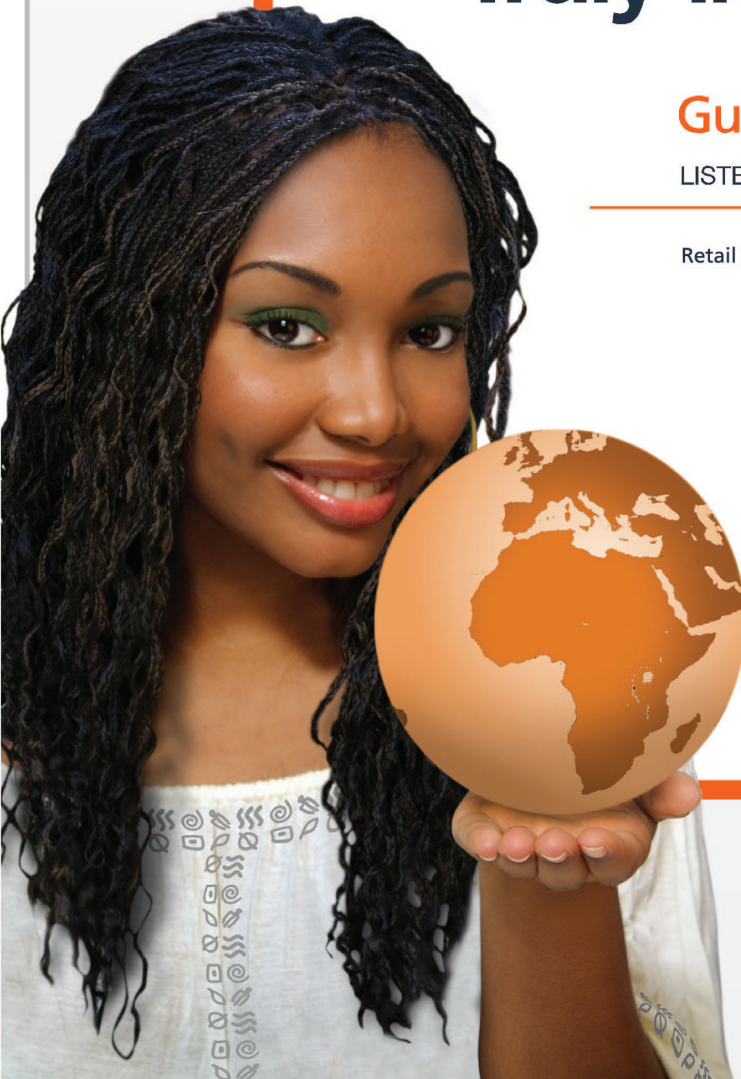
Guaranty Trust Bank plc

LISTED ON THE LONDON STOCK EXCHANGE

Retail Banking | Corporate Banking | Private Banking
Investment Banking | Treasury Services

Wouldn't you rather bank with us?

www.gtbank.com



+234 700 GTCONNECT or +234 700 48266328,
+234 1 448 0000, +234 80 3900 3900, +234 80 2900 2900

Connect with us

