



Theme
**Life Beyond
the Diagnosis**





LIFE BEYOND THE DIAGNOSIS

Conference Date:

3 - 4 August 2021

www.gtcopl.com/autism



Leading With Your Life Story



Morénike Giwa Onaiwu

Advocate, Public Speaker, Writer, Educator, Researcher, Mom



Disclaimer

COURT HEARING

led to notify _____ to the Sheriff of _____ COUNTY
ing in the case of _____ Court No. _____ County
, 20 _____ under _____



the
5 C's





Theme
Life Beyond
the Diagnosis



Leading With Your Life Story

This presentation will illustrate key concepts of inclusion as well as highlight practical strategies ways to transform difficult lessons learned from past experiences and/or mistakes into useful knowledge that can be used for navigating life, developing one's own unique style of personhood and leadership, and overall growth.





Theme
Life Beyond
the Diagnosis



the story
of
my life

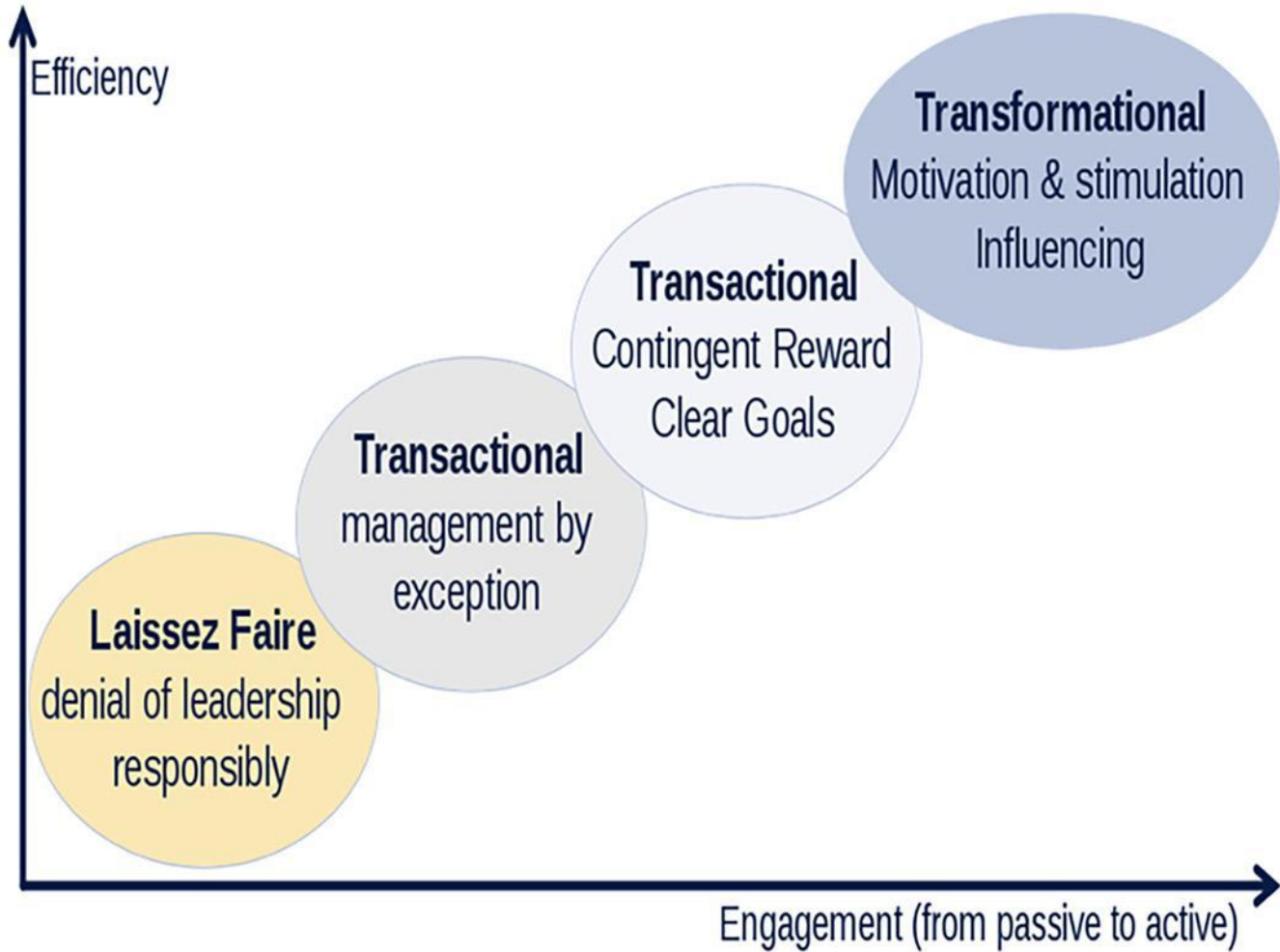




LEADERSHIP

The word "LEADERSHIP" is displayed in a horizontal line of ten colored circles. Each letter is contained within a circle of a different color: L (yellow), E (light pink), A (light brown), D (light blue), E (green), R (orange), S (purple), H (blue), I (yellow), and P (light pink). Curved arrows of various colors (blue, orange, light blue, purple, yellow, green, brown, yellow, purple) are positioned around each circle, pointing in a clockwise direction, suggesting a continuous cycle or process.



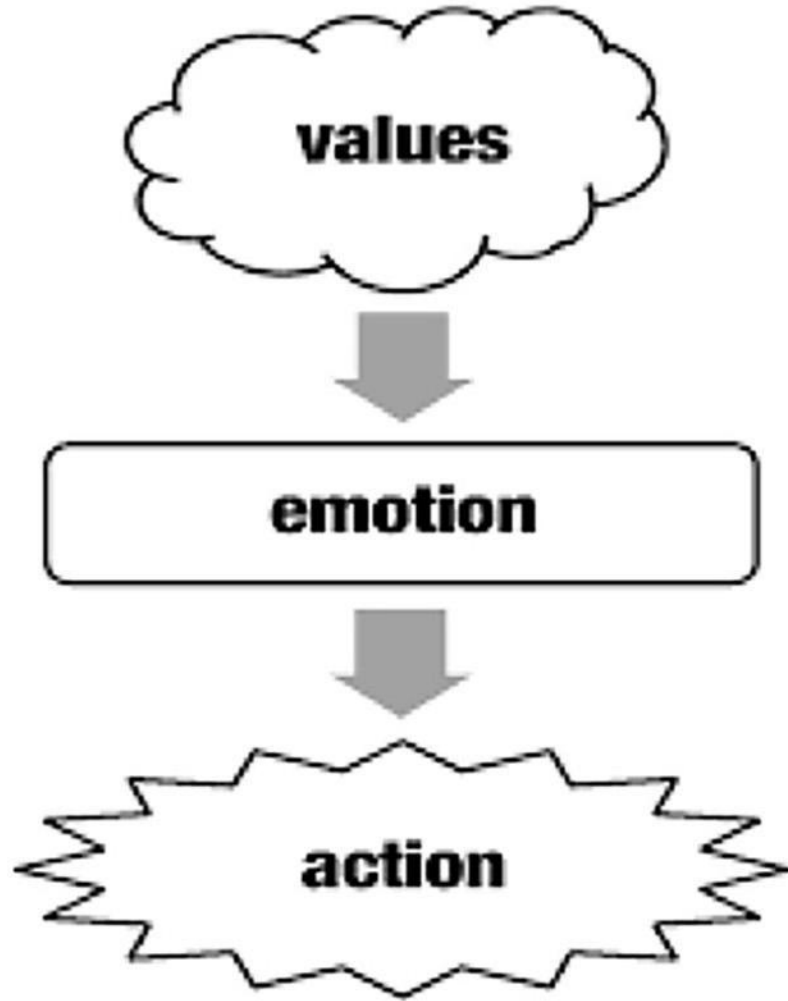


			
POWER	SKILL	MOTIVATION	RESPONSIBILITY

LEADERSHIP

TEAMWORK	COMMUNICATION	COMPETENCE	SUPPORT
			





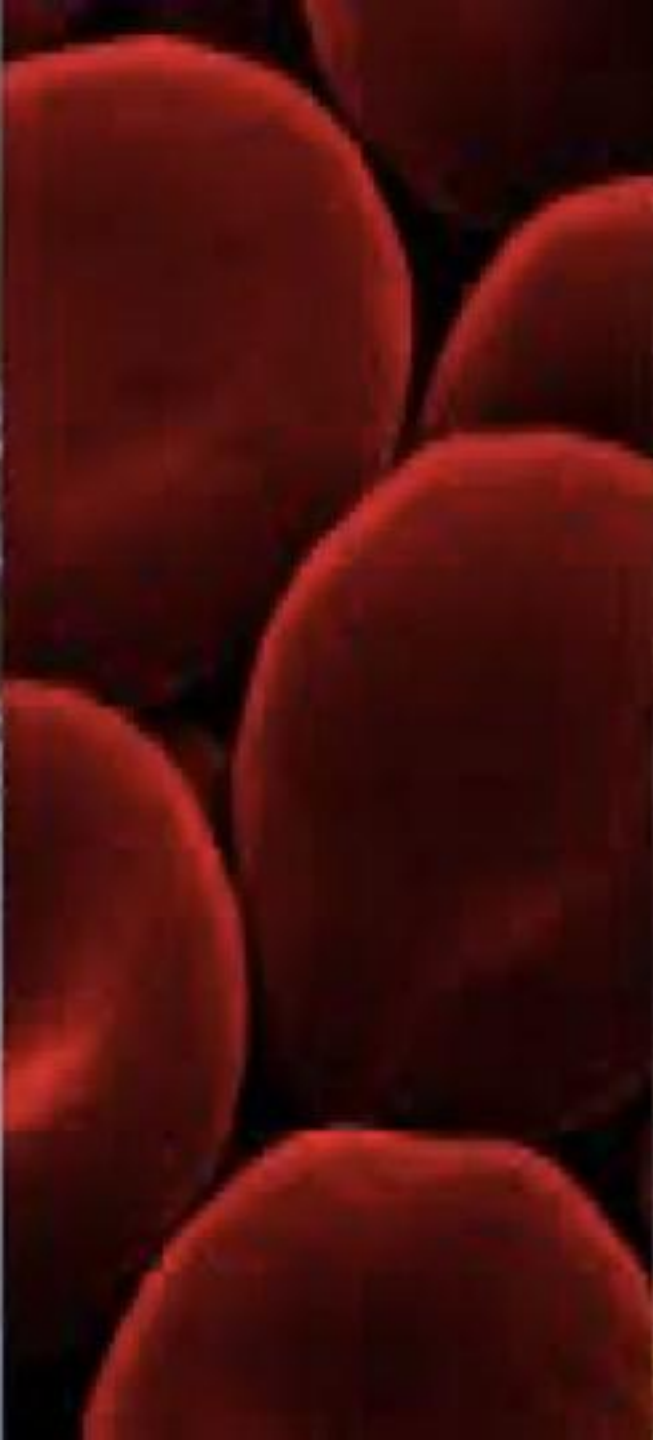


Theme
Life Beyond
the Diagnosis





Theme
Life Beyond
the Diagnosis





Theme
Life Beyond
the Diagnosis





Theme
Life Beyond
the Diagnosis





Theme
Life Beyond
the Diagnosis





Theme
Life Beyond
the Diagnosis



Rest In Peace London McCabe



On the fourth of November 2014 it was reported that London McCabe's mother, Jillian, allegedly threw the six year old off a bridge.

This is a tragic story of an innocent life, taken away far too early.

London was a non-verbal, severely Autistic person, however his disability does not decrease the value of his life, nor does it decrease the severity of this crime.

In the court of law, may London get the justice he deserves.

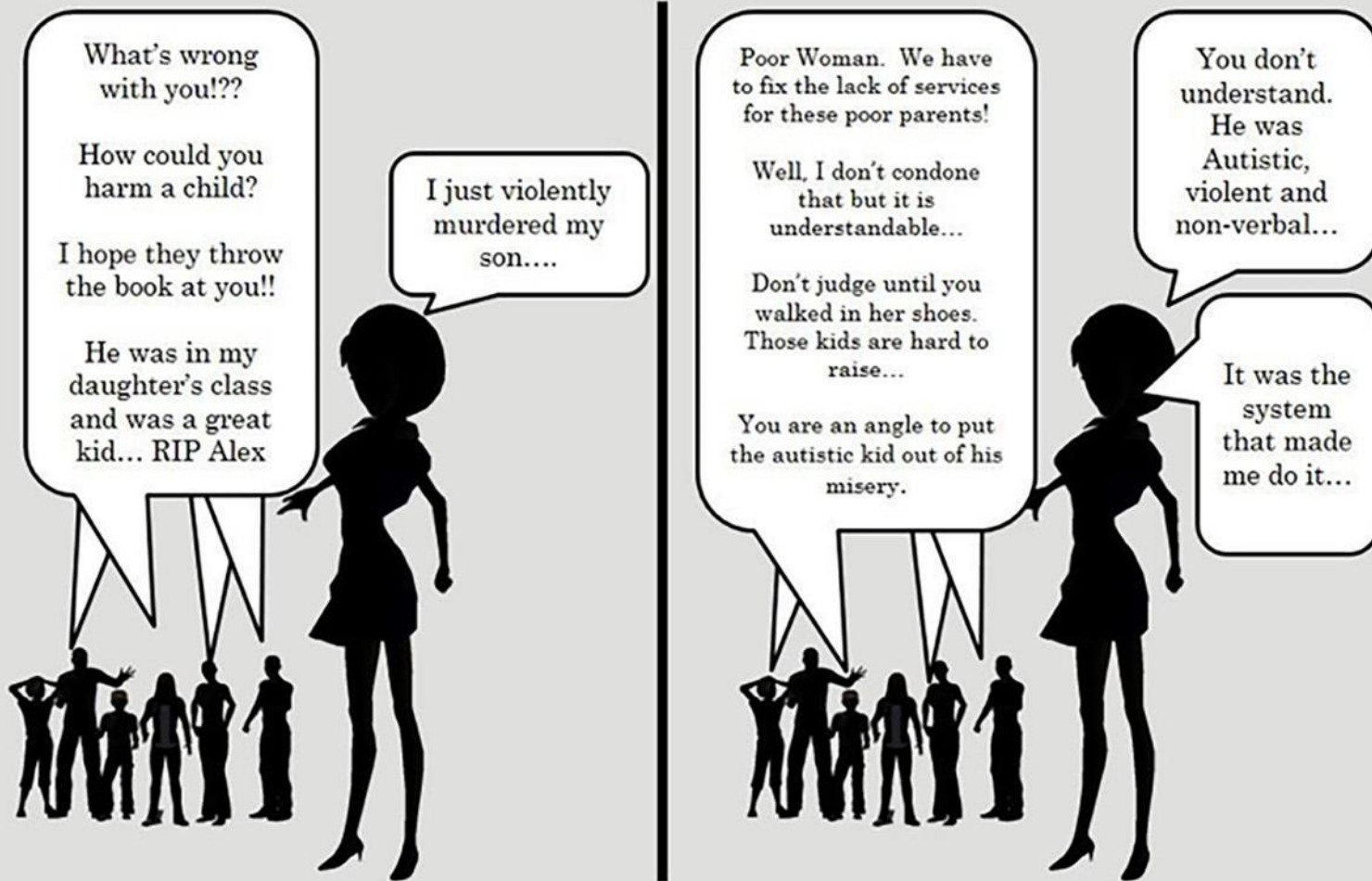
As we mourn, may this tragedy be a reminder for everyone, to treat others with the respect, dignity and empathy they deserve, regardless of disability.

RIP London McCabe

People
Not Puzzles



The DEADLY Double Standard



Visit Karla's ASD Page in Facebook







Theme
Life Beyond
the Diagnosis







Theme
Life Beyond
the Diagnosis



သတိ

အမျိုးသမီးများမဝင်ရ

LADIES ARE NOT ALLOWED TO ENTER.



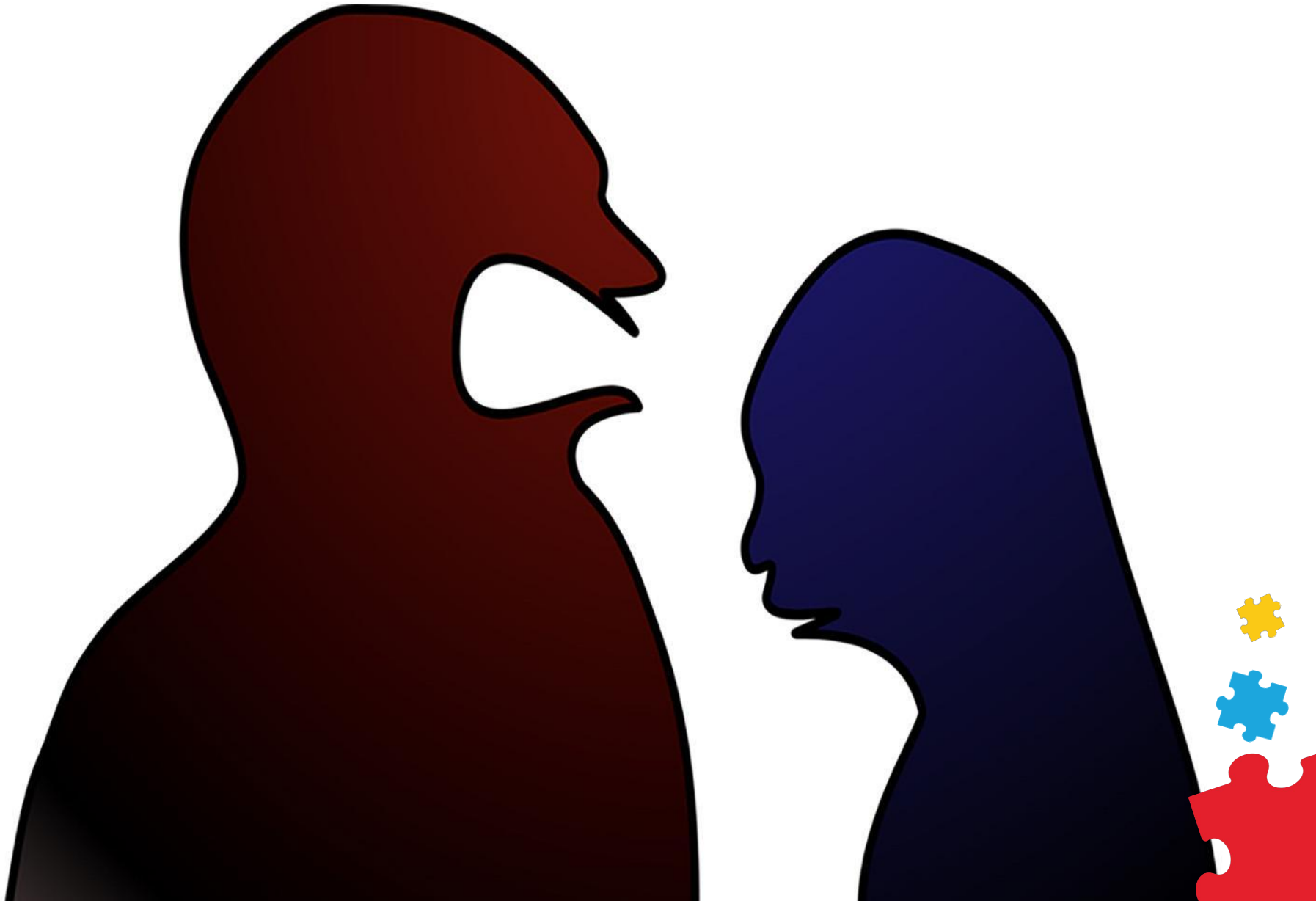


Theme
Life Beyond
the Diagnosis





Theme
Life Beyond
the Diagnosis





Theme
Life Beyond
the Diagnosis





Theme
Life Beyond
the Diagnosis





Theme
Life Beyond
the Diagnosis



God grant me
the serenity to
accept the things I
cannot change;
courage to change the
things I can;
and
wisdom to know the
difference.

Nov





Theme
Life Beyond
the Diagnosis







Theme
Life Beyond
the Diagnosis





Theme
Life Beyond
the Diagnosis



OPPORTUNITY →
← FAILURE







Theme
Life Beyond
the Diagnosis

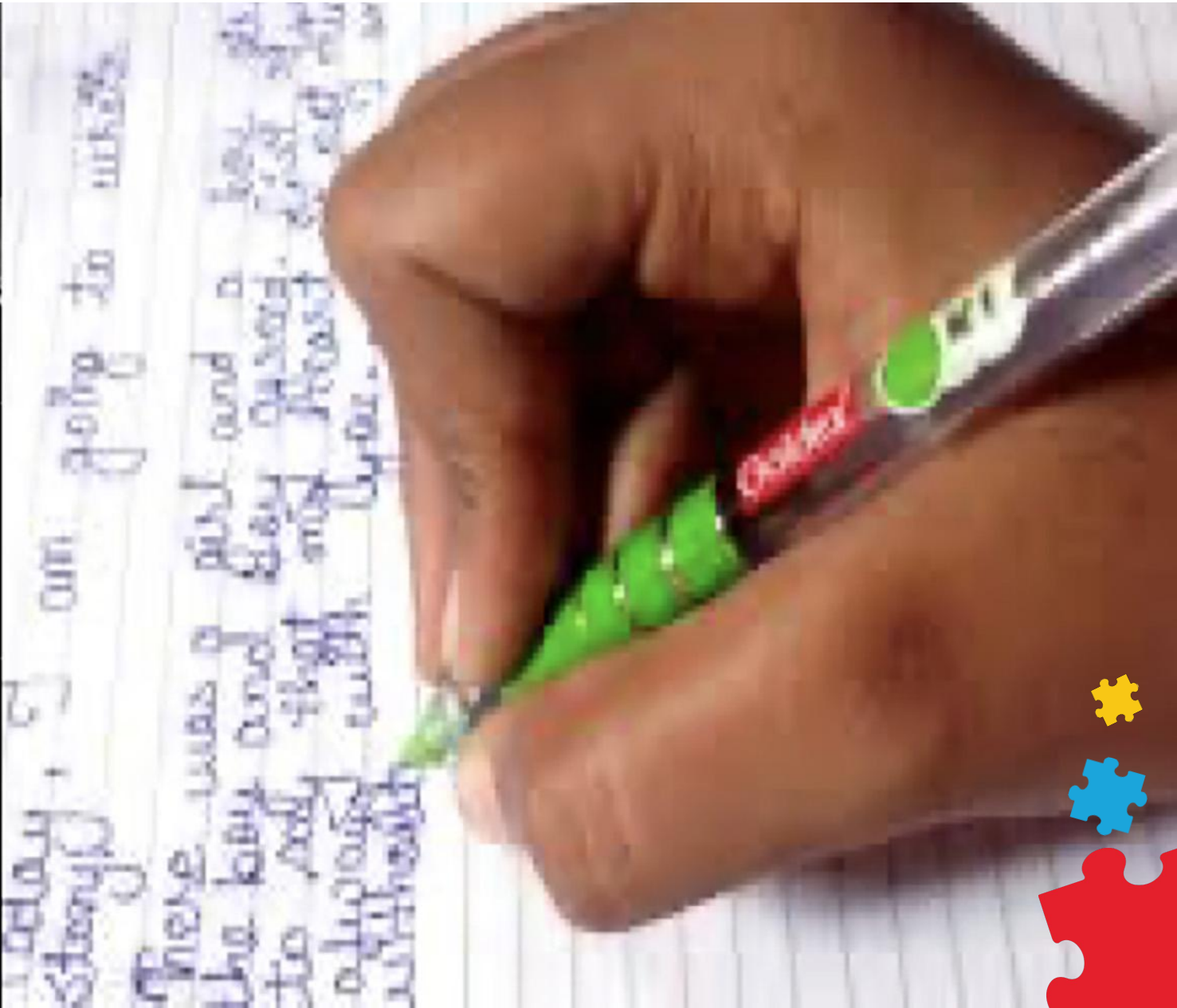


I'm such a failure at everything

so young,
so damaged.

"How are you?"

Confused; Betrayed
Useless
Broken
Never good Enough
Fragile; Anxious
Lonely
you don't notice it
you hate to admit
you're
Rejected
Lonely
Defeated





Theme
Life Beyond
the Diagnosis



POLICE INVESTIGATING HOMICIDE

HARWIN DR. & S. GESSNER RD. | SOUTHWEST HOUSTON



11:10



Theme
Life Beyond
the Diagnosis



2 INVESTIGATES

2ND 15-YEAR-OLD MURDERED AT SOUTHWEST HOUSTON APARTMENT COMPLEX



5:07





Theme
Life Beyond
the Diagnosis





Theme
Life Beyond
the Diagnosis





Theme
Life Beyond
the Diagnosis



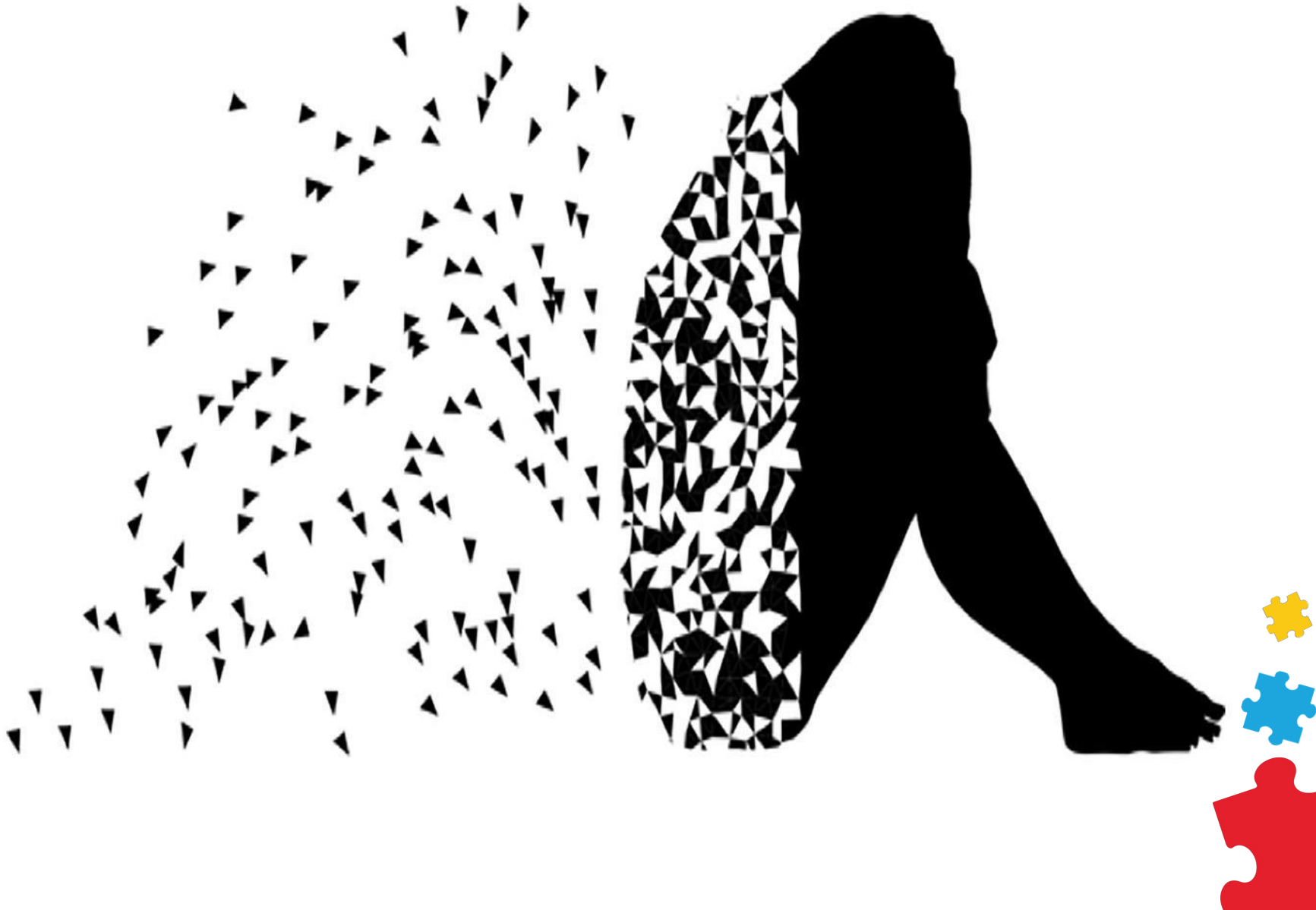


Theme
Life Beyond
the Diagnosis





Theme
Life Beyond
the Diagnosis





“
Social cues elude her;
inferences too
So very smart, yet she
doesn't have a clue...
Languishing in a world
whose rules are unspoken
She is perceived as defective
and broken

- *Morénike Giwa Onaiwu*”





Theme
Life Beyond
the Diagnosis





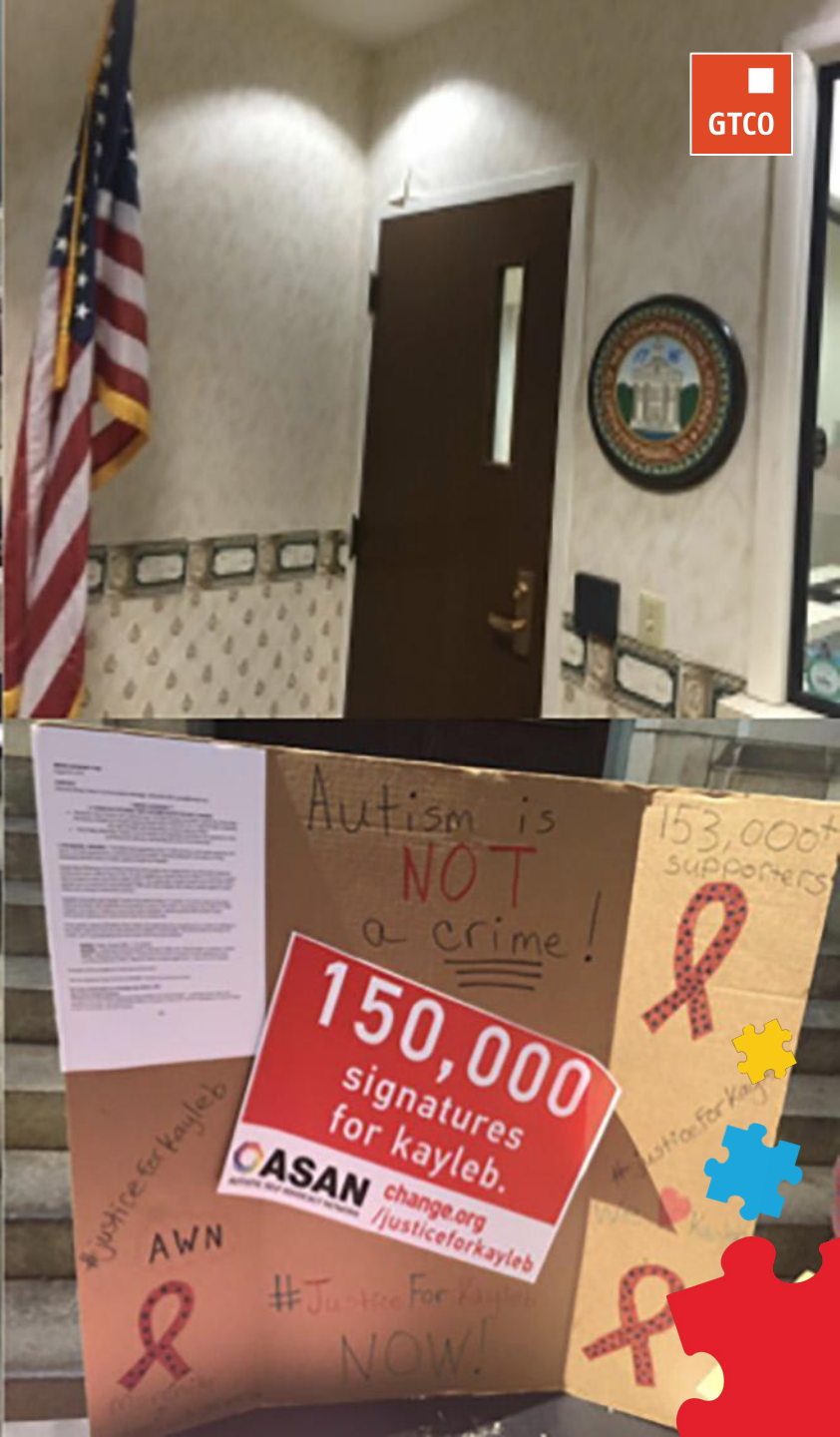
Theme
Life Beyond
the Diagnosis







Theme
Life Beyond
the Diagnosis





Theme
Life Beyond
the Diagnosis







Theme
Life Beyond
the Diagnosis





Theme
Life Beyond
the Diagnosis



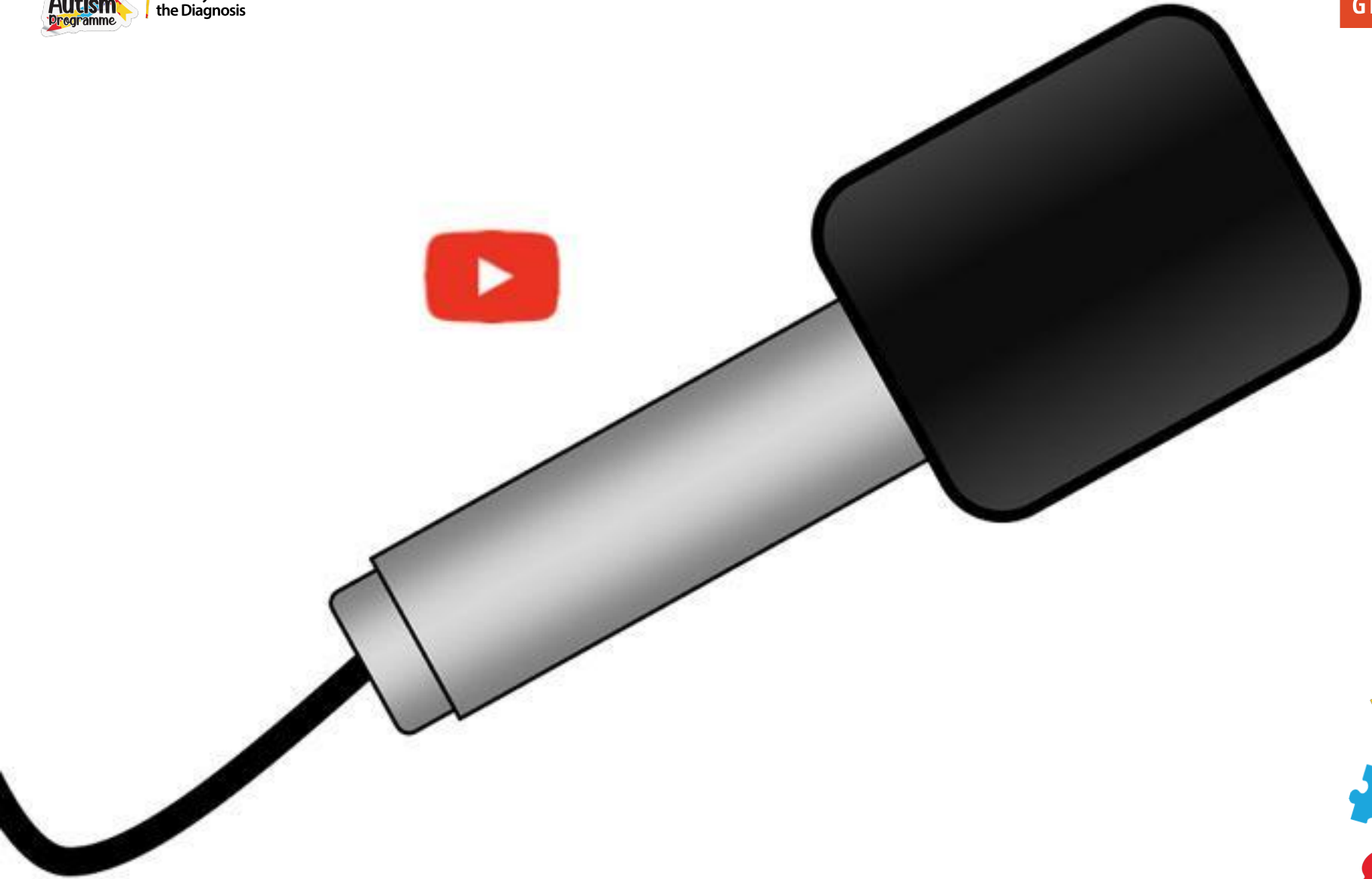


Theme
Life Beyond
the Diagnosis





Theme
Life Beyond
the Diagnosis



THANK YOU!



gato iberico





Theme
Life Beyond
the Diagnosis



Why fit in
when you
were
born
to
stand out?

A stylized illustration of the Cat in the Hat, featuring a red and white striped hat and a white body with blue outlines.

Contact:

Website: MorenikeGO.com

Appointments: MorenikeGO.YouCanBook.Me

Email: S.Luna@AdvocacyWithoutBorders.org

Social media: [@MorenikeGO](https://www.instagram.com/MorenikeGO)



Morénike Giwa Onaiwu

Advocate, Public Speaker, Writer, Educator, Researcher, Mom



